

BOARD OF COMMISSIONERS
Jason Chappell, Chair
Jake Dalton, Vice-Chairman
Larry Chapman
Teresa McCall
Chase McKelvey



COUNTY MANAGER
Jaime Laughter
828-884-3100
Fax 828-884-3119

101 South Broad Street
Brevard, NC 28712

March 29, 2025

FOR IMMEDIATE RELEASE

Transylvania County Forest Fire Update, 6 PM

*Note: messages will be pushed out on social media and the evacuation map updated on www.transylvaniacounty.org as conditions change. **A new page has been added with information and helpful links.** Reports will be issued three times per day. A video update will be posted Sunday by 12 PM and an in person press conference will not be held.*

Fireline, Evacuations and Firefighting Update (See map at end of report)

Transylvania County is under a State of Emergency due to forest fire danger from three fires:

- Pisgah National Forest fire at Rattlesnake Branch Fire estimated at 795 acres (Not breached into the county) US Forest Service is working this fire.
- Persimmon Ridge fire from South Carolina, estimated at approx. 2,000 acres (not breached into the county) The Southern Area Blue Team working this event is expecting to be able to maintain the boundaries on this fire today and are working towards containment.
- Table Rock Fire from South Carolina approx.. 12,000 acres (has breached into the county) Fire crews from local, state, and federal resources have been on the ground continuing with back burning and line strengthening activities. An updated fire line map will be provided once controlled burn operations have been completed and aerial support is able to map the line.

- Rain is expected, but residents need to remember that even with rain conditions are such that the burn ban will remain in place.
- The evacuation boundary has not changed since it was initially issued on Wednesday and no homes have been impacted by the fire. 758 Structures are under a mandatory evacuation and emergency shelter is open at Transylvania County Parks and Recreation at 1078 Ecusta Rd. 8 people were registered in the shelter as of this evening. RVs cannot be accommodated at the shelter. Mountain Falls RV Park is willing to accept RVs at their location.

Operational Plan Report

- Aerial support continues this afternoon to combat the fire and allow for tracking of the fire line. Periodic map updates will be issued as a snapshot of the known fire line when available. The Southern Area Blue Team has increased their controlled burn area to 5000 acres and will fly the boundary once the controlled burn is complete.
- The Table Rock Complex Fire expanded into North Carolina with direct impacts on Connetsee Fire and Cedar Mountain Service District. This is a complex wildland fire event that requires multi agency response. This includes, but is not limited to, the North Carolina Forest Service, South Carolina Forestry and federal assets working to fight the fire and provide coordinated containment efforts. Transylvania County Emergency Management, Connetsee Fire Rescue and

Cedar Mountain Fire Rescue established a Unified Command Structure to collaborate with these agencies and manage the event impact within Transylvania County. The sheer size of the wildland fire and firefighting needs requires mutual aid from local fire departments within the County and mutual aid assistance from other Counties in North Carolina, South Carolina and Georgia. It also requires assistance of local law enforcement, state law enforcement and mutual aid emergency management assistance to manage and control assets.

- On Friday, March 29, the Blue Team, a federal asset began operations within Transylvania County to assist the North Carolina Forest Service efforts to contain the Table Rock Fire expansion into North Carolina. The Blue Team is a specialized, interagency Incident Management Team used to manage large and complex wildfires. The efforts of the North Carolina Forest Service and the Blue Team in North Carolina are being coordinated with the South Carolina efforts and command structure fighting the Table Rock Fire. The North Carolina Forest Service and Blue Team are also imbedded with the Transylvania County unified command structure to ensure a coordinated effort to fight the wildland fire and provide structural protection to areas within Connestee and Cedar Mountain Fire Service Districts. The blue team continues to increase staffing and resources to assist.
- Miscommunication can be dangerous and creates additional challenges in the response effort. We have received at least one fake facebook account posing as a government official posting fire sightings and citizens directing others to inaccurate information. Updates will be issued from Unified Command with multi-agency information on the effort underway on Transylvania County Social Media, website and through the alert system and shared through local partners.

Additional Information

- Transylvania County Cooperative Extension is coordinating with our agriculture community regarding livestock.
- Weather conditions were more favorable today and rain is expected tonight into tomorrow that be helpful to fire control. Additional evacuations may be ordered. Those signed up for emergency alerts on the Transylvania County website will receive notifications of evacuation only if their address is impacted. All residents are encouraged to be proactive by registering their address and phone number in the county alert system. Take prevention measures around your home and vehicles to remove dry leaves and vegetive debris that could be ignited with embers. A tutorial to support sign up is available on the county website at www.transylvaniacounty.org. Air quality is forecast to be in the red zone for Transylvania County tomorrow. Code Red means prolonged exposure to the air may be unhealthy for anyone. All residents should consider limiting prolonged or heavy exertion outdoors.
- Only call 911 if you see active fire. Smoky conditions throughout the county are expected.

Connestee Fire and Rescue Update

* Yesterday and today have been very productive days for firefighters working to contain the Table Rock Complex Fire in North Carolina.

* Connestee Fire Rescue has been working closely with South Carolina fire officials and the Southern Incident Management Blue Team to monitor the burn out operations and any effect they may have to North Carolina.

* At this time Connestee Fire Rescue and Mutual Aid Crews from across North and South Carolina continue to monitor fire lines, provide structural protection.

* Multiple crews are currently assisting North Carolina Forest Service with Wildland Fire Suppression operations on the front lines.

* We do have great news to share, though we are not out of the woods quite yet several fire lines appear to be holding and containing the fire in certain areas.

* Connestee Fire Rescue Inc would like to thank all of the local, state and federal resources who have come to assist in this effort.

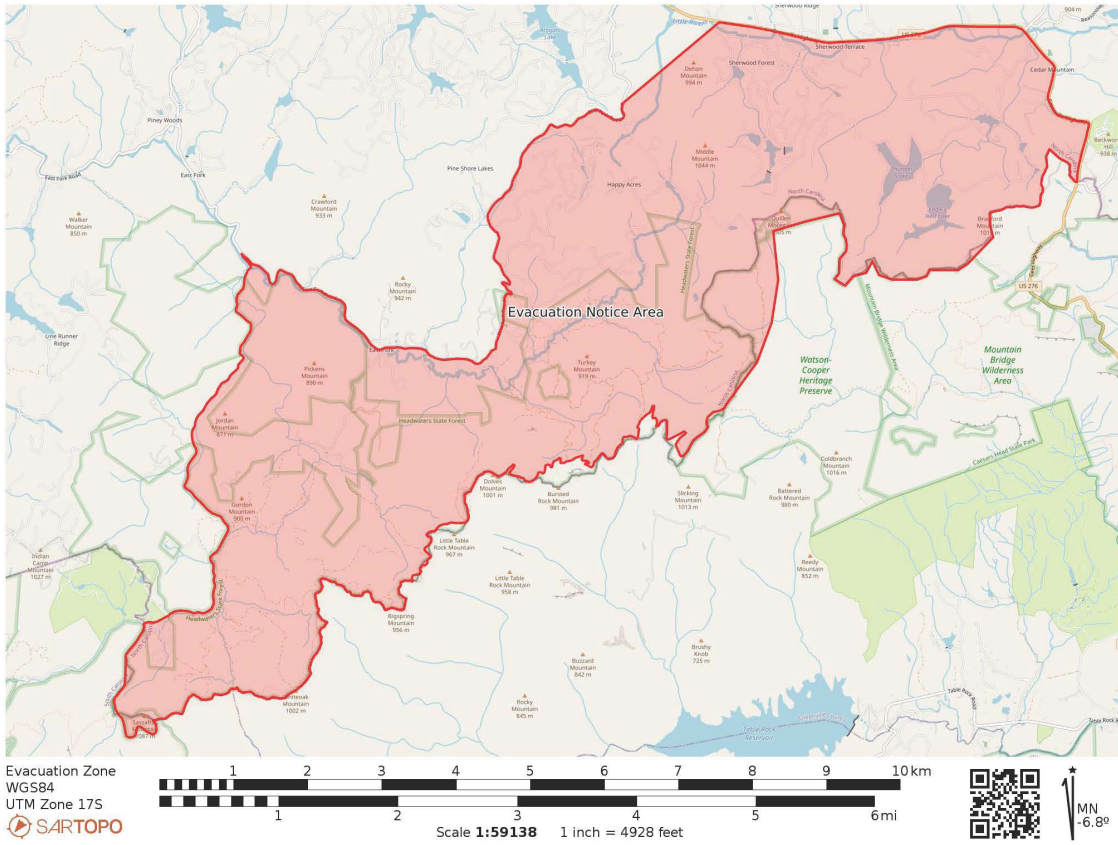
Cedar Mountain Fire and Rescue Update

- * Mutual aid crews have been moved to the front lines of the fire along with Cedar Mountain's brush truck to engage in active fire line control.
- * Residents are still encouraged to remove leaves and dry vegetative debris from around their homes, vehicles and gutters. Also remove other flammable items like cushions, cardboard, gas cans and other items away from your home. This will support the ability of fire departments to protect homes. See Readync.gov for information on what to consider when being evacuated.
- * Handouts are available at the Cedar Mountain Fire Rescue station for residents who need further assistance with preparation activities.

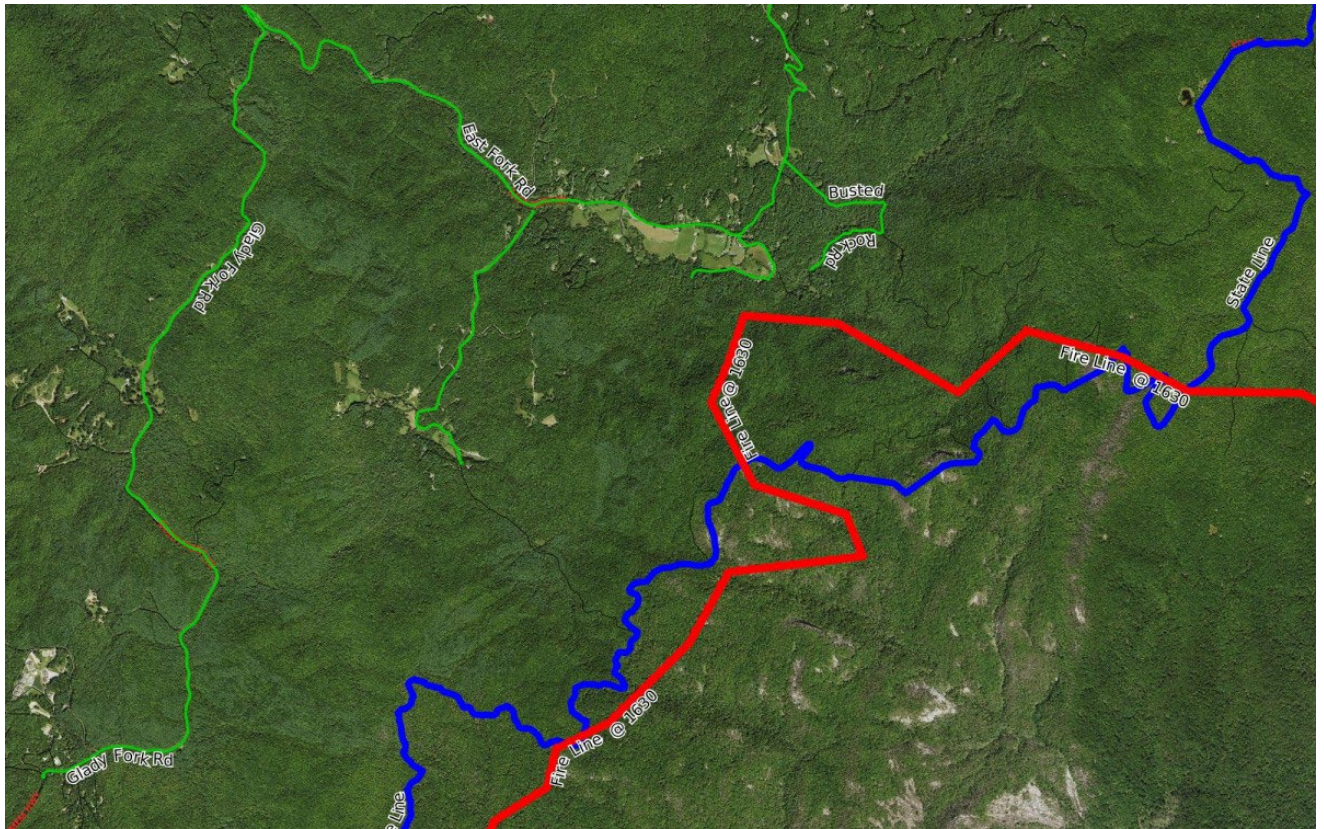
Transportation and Curfew Update

- * A curfew is in place from 8 PM to 8 AM tonight for the evacuation area only. Transylvania County Sheriff's Office continues to actively patrol the evacuation area.
- * The US Forest Service has closed the Blue Ridge Parkway from 215 to Asheville.
- * 276 is closed from the Cascade Lake Rd to Hwy 11. Within Transylvania County, travel is restricted into the evacuated area as shown on the map at www.transylvaniacounty.org.
- * East Fork Road is closed from the East Fork entrance of Conestee Falls, to Gladys Fork Rd to keep roads clear for fire crews to travel.
- * The stationary map at www.transylvaniacounty.org and the file showing on SARTOPO will be updated as conditions change. Dupont State Forest has closed some trails. See their facebook for announcements on trail closures.

Evacuation Map established 3-26-25 and current as of 3-29-25 at 6 PM



Fire Line in Transylvania County Update as of 3-28-25 at 4:30 PM (updated fly data not available at time of report)



Map will be updated once the fire line is able to be remapped after backburn is completed.