

BOARD OF COMMISSIONERS
Jason Chappell, Chair
Jake Dalton, Vice-Chairman
Larry Chapman
Teresa McCall
Chase McKelvey



COUNTY MANAGER
Jaime Laughter
828-884-3100
Fax 828-884-3119

**101 South Broad Street
Brevard, NC 28712**

March 27, 2025

FOR IMMEDIATE RELEASE

Transylvania County Forest Fire Update, 12 PM

Note: messages will be pushed out on social media and the evacuation map updated on www.transylvaniacounty.org as conditions change. A media briefing for tomorrow will be announced.

*Transylvania County is under a State of Emergency due to forest fire danger from three fires:

- Pisgah National Forest fire at Rattlesnake Branch Fire estimated at 623 acres
- Persimmon Ridge fire from South Carolina, estimated at 1,353 acres
- Table Rock Fire from South Carolina 4,556 acres

*A multi-agency effort is underway to prepare for potential forest fire spread into the county with coordination with local, state and federal leaders. Over 138 support personnel and 22 apparatus have responded thus far and additional resources are being requested. Resources are on the way from the Fannin County, Georgia. Transylvania County Cooperative Extension is coordinating with our agriculture community regarding livestock.

* Air quality today is expected to be poor. Residents should exercise caution. Weather conditions this afternoon are expected to pose challenges for fire control in the southern section of Transylvania County at the state line. Additional evacuations may be ordered. Those signed up for emergency alerts on the Transylvania County website will receive notifications of evacuation only if their address is impacted. All residents are encouraged to be proactive by registering their address and phone number in the county alert system. Take prevention measures around your home and vehicles to remove dry leaves and vegetive debris that could be ignited with embers.

*758 Structures are under a mandatory evacuation and emergency shelter is open at Transylvania County Parks and Recreation at 1078 Ecusta Rd.

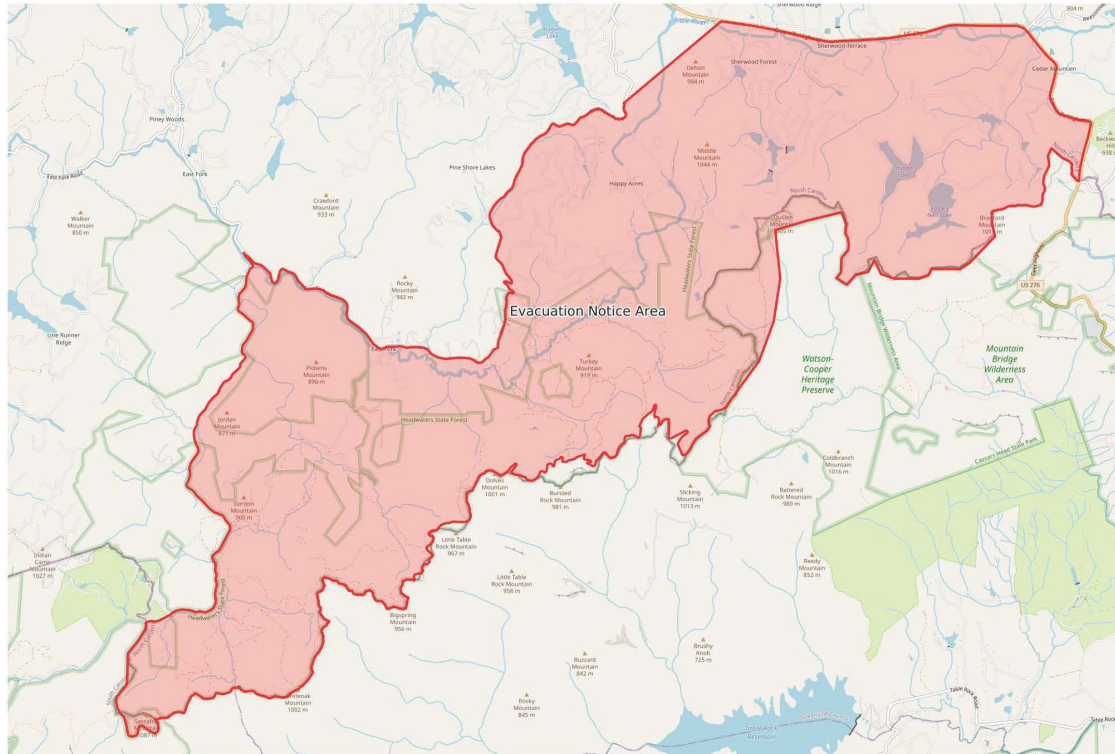
* County service changes for March 27, 2025 due to county forest fires and evacuations:

Parks and recreation and health department clinic are closed to support shelter operations and the animal shelter is closed to surrender intakes. Environmental Health, Community Health, WIC services and animal control remain open. The See Off Solid Waste Convenience Site closed at 11 this morning due to smoke and ash hazards.

*Only call 911 if you see active fire. Smoky conditions throughout the county are expected.

*Comporium has suspended planned broadband outages in Transylvania County to support communication infrastructure and has increased the service to Connestee Fire Department to support response operations.

*The US Forest Service has closed the Blue Ridge Parkway from 215 to Asheville. 276 is closed from the NC/SC line to Hwy 11. Within Transylvania County, travel is restricted into the evacuated area has shown on the map at www.transylvaniacounty.org. A curfew was in effect last night in the evacuation area and may be implemented again tonight to allow for response crews to continue operations without interference. The stationary map at www.transylvaniacounty.org and the file showing on SARTOPO will be updated as conditions change.



Evacuation Zone
WGS84
UTM Zone 17S
SARTOPO

