



TRANSYLVANIA
— **COUNTY** —
N O R T H C A R O L I N A

BOARD OF COMMISSIONERS MEETING

Wednesday, April 15, 2020 @ 4 pm

Public Comment

Sign up is required.

Speakers are limited to three minutes.

The public comment period will close when there are no more speakers or the 15-minute limit is reached.

Agenda Modifications

- Add - Resolution #12-2020 Recognizing National Public Health Week in Transylvania County under New Business

Consent Agenda

All items under the Consent Agenda
are recommended for approval.

A. Minutes

- ❑ July 7, 2019, March 9, 2020 & March 23, 2020 Regular Meetings

B. Proclamation – Older Americans Month 2020

- ❑ Request from Sylvia Petit, Chair of the TC Council on Aging
- ❑ May 2020 theme is *Make Your Mark*
 - Promotes independence, inclusion and participation
 - Engages older adults through education, recreation and service
 - Seeks to connect people with opportunities to share their time, experience and talents
- ❑ Approve Proclamation #11-2020 Older Americans Month 2020

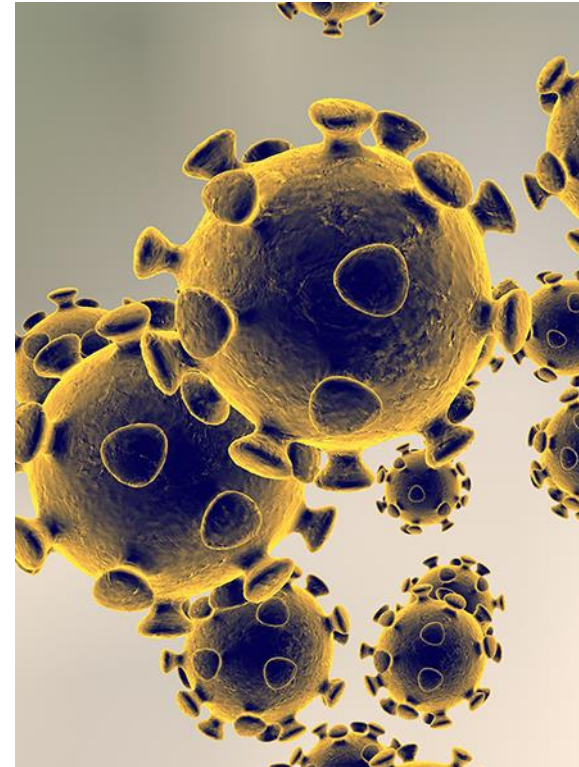


Coronavirus/COVID-19

- A. Coronavirus/COVID-19 Update – Public Health
- B. Coronavirus/COVID-19 Update – County Operations
- C. Coronavirus/COVID-19 Update – Business Support
- D. Impact of COVID-19 on the FY 21 Budget Preparations
- E. Allocation of Funds for COVID-19 Response
- F. Families First Coronavirus Response Act Policy Compliance
- G. Late Listing Penalty Relief
- H. Informational Letter to Second Homeowners

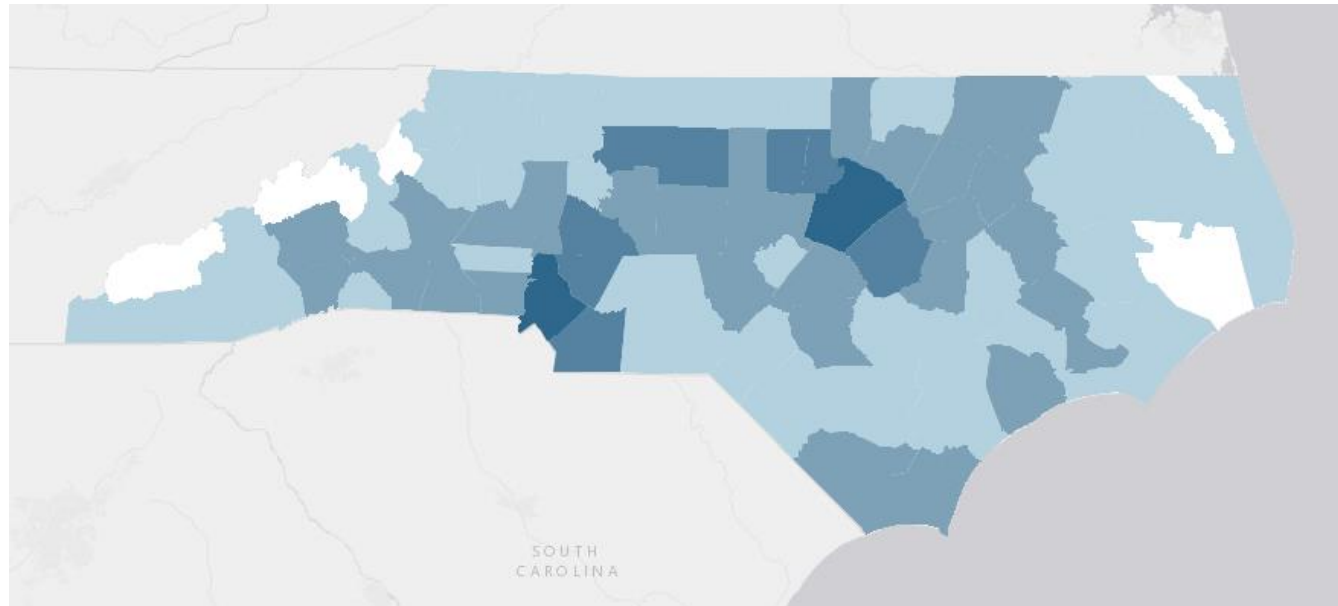
A. Coronavirus Disease: COVID-19 Briefing

- This remains an evolving pandemic
- Recommendations, executive orders, and resources are evolving in response to state and national data



COVID-19 Lab-Confirmed Case Data

- 2,006,513 cases globally in 185 of 195 countries*
- 601,472 cases in the United States*
- 5,123 cases in North Carolina in 93 counties**
- 6 cases in Transylvania County



* Johns Hopkins University dashboard, updated 4/15/20 at 11:40 am

** NCDHHS, updated 4/15/20 at 11:35 am

Transylvania Data and Processes

Testing through State
Public Health Lab,
LabCorp, Mission
Hospital:

- 106 negative
- 6 positive
- 1 pending

Agency processes:

- Daily Epi Team
 - ▣ Planning
 - ▣ Data analysis
 - ▣ Communication strategies
- County EOC Team
- LTCF/ECF Team
- Hotline Team
- Hospital communications

COVID-19 and LTCF/ECF

Greatest risk of severe illness for:

- 65+ years of age
- Group living facilities (long-term care, elder care/nursing homes, corrections)
- Existing health issues:
 - ▣ Chronic lung disease, moderate to severe asthma
 - ▣ Heart disease with complications
 - ▣ Immunocompromised including cancer treatment
 - ▣ Severe obesity, uncontrolled diabetes, renal failure, liver disease

Transylvania group living facilities:

- 2 long-term care
- 4 elder care

Statewide group living outbreaks (2+ lab-confirmed cases):

- 46 facilities in 28 counties

Support to LTCF/ECF

- Dedicated LTCF/ECF Agency Team
- Collaboration with the Physicians Roundtable via Dr. Rik Emaus and Dr. Timothy Shea
- Daily outreach to assess needs
- Sharing best practices/lessons learned from other counties
- Strike plan for facility testing when needed
- PPE assessment

Emergent Needs Response

- Collaboration on options for homeless residents with The Haven and Pisgah Health Foundation
 - ▣ Private camp offered quarantine/isolation support
 - ▣ Pisgah Health Foundation provided funding \$61,000
 - ▣ Assessing other needs related to handwashing stations
- Staffing COVID-19 agency hotline
 - ▣ 130+ calls to date
 - ▣ Emotional/mental health needs a major trend

Communications

- Daily updates to website (transylvaniahealth.org) and social media
- Weekday updates to county and city employees
- Weekday updates to Board of Health
- Summary guidance to partners on Executive Orders
- Summary guidance to partners on NCDHHS and CDC recommendations
- Video updates and topic demonstrations
- Media interviews and updates on request

How We Flattened the Curve

- Community support of social distancing
- Community support of limited gatherings
- Community support of minimized business exposures
- Use of face coverings
- Adherence to self-isolation for individuals with confirmed or suspected exposure
- Staying home when sick
- Good hand washing and cough covering

Benefits of Flattening the Curve

- Buy time to prepare hospital systems for critically ill patient surge
- Potential to break surge into smaller waves with less likelihood to overwhelm systems
- Gain time for advances in testing technology for infection and recovery assessment
- Opportunity to gain lessons learned from hot spots
- Every community will face a surge of some level; extra time and insight makes for better preparation

B. Coronavirus/COVID-19 Update – County Operations

- ❑ Most county services are essential under governor's orders
 - ❑ Mandates for county services at state level continue
- ❑ County buildings closed to the general public traffic
 - Providing service via phone, computer or by appointment to limit access and potential for spread
 - County employees practicing social distancing measures
 - Some departments staggering schedules
 - Evaluating feasibility of telework if necessary, at some juncture
 - Distributing PPE for use
- ❑ New Adventure is an essential worker child-care facility under the state
- ❑ Starting to plan for surge in county service needs in coming months of economic recovery
- ❑ State and Federal advocacy ongoing- new restrictions from Pisgah Forest announced
- ❑ Working on testing availability for first responders

B. Coronavirus/COVID-19 Update – County Operations


- ❑ Seeing an increase in calls for Law Enforcement, particularly Domestic Violence type calls
- ❑ Sheriff's office is enforcing the order regarding short term rentals- all investigations have resulted in no violation found of the order
- ❑ Supply issues being worked on at state and local level
 - State using priority list for resources fulfillment; issuing supplies for 7-day burn rate
 - Long term care facilities have state submittal link that tracks back through county EM to request PPE
 - All rescue agencies received 10 full sets of PPE
 - Working with local makers to get cloth makes in hands of frontline workers; local makers have produced 100's of masks!!!
 - Working with LOSRC on a group order of masks
 - Raybow/PharmAgra donating masks
 - Gaia Herbs donating 50 gallons of hand sanitizer
 - Egolf and Pisgah Health Foundation donated funds
 - Community Makers making cloth masks- Connestee Quilters, DAR/Billie Wilson and many at home sewers

B. Coronavirus/COVID-19 Update – County Operations

- ❑ Working with nonprofits on ways to connect people with needs and services
 - Launching temporary call in line hosted by the library to take contact information and identify basic needs for nonprofit response
 - Cooperative Extension filling role of EM food coordination (state EM request)
 - Intent is to connect people to resources and prevent duplication of effort
- ❑ Working with CEO Michele Pilon on TRH surge planning
 - ❑ How to maximize space at hospital site and alternate site with staffing resources from hospital
 - ❑ Tents, isolation procedures for COVID patients, PPE and Scrub laundering, restricting access, healthcare pay protection programs
- ❑ Public Health prevention work with congregate living facilities is a key strategy
- ❑ Information from State and TRH indicates flattening the curve efforts are working because projections are lower than expected; will continue to work toward preparedness efforts

C. Coronavirus/COVID-19 Update – Business Support



TRANSYLVANIA
ECONOMIC  Alliance

April 15, 2020

A TRANSYLVANIA COUNTY MANUFACTURING GUIDE TO 6 FEET OF SOCIAL DISTANCING

(Measurements are approximate - just keep your distance)



**1 Sylvansport
GO EASY Camper**



36 bottles of Gaia Herbs elderberry syrup



5 kegs of local brews



**2 Super Sacks
of powdered milk**



TRANSYLVANIA
ECONOMIC  Alliance

Occupations with increased posting activity

Top 10 ranked by % change over the last 30 days

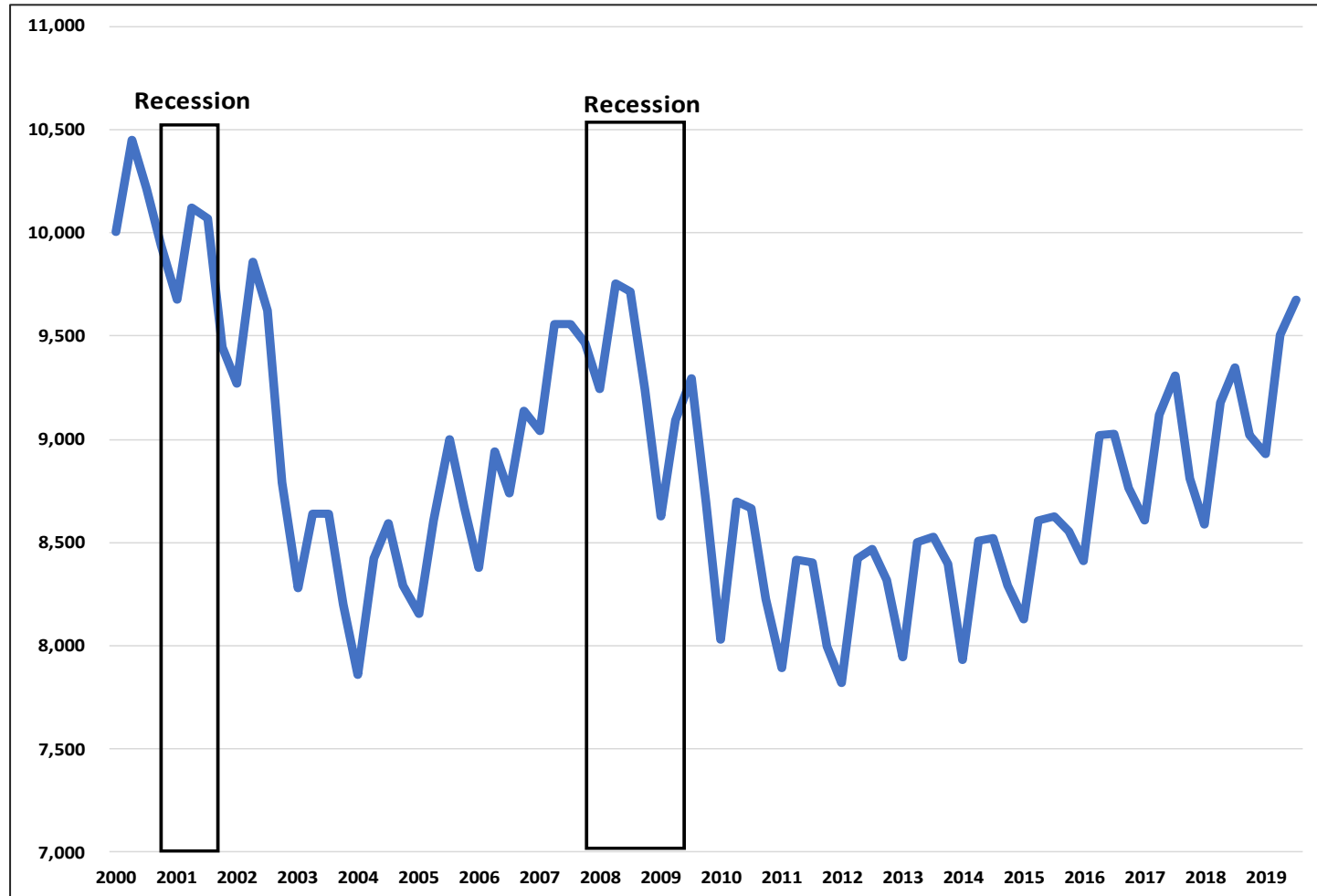
Occupation	Active Postings	% Change
Pharmacy Technicians	991	39.41%
Real Estate Sales Agents	493	32.37%
Office Clerks, General	434	24.79%
Psychiatrists	413	15.37%
Secondary School Teachers, Except Special and Career/Technical Education	533	13.76%
Social and Human Service Assistants	1127	12.51%
Natural Sciences Managers	460	12.47%
Physicians and Surgeons, All Other	935	11.41%
Secretaries and Administrative Assistants, Except Legal, Medical, and Executive	1240	11.40%

Occupations with slowed posting activity

Bottom 10 ranked by % change over the last 30 days

Occupation	Active Postings	% Change
Dishwashers	380	-28.95%
Waiters and Waitresses	710	-22.90%
Accountants and Auditors	1287	-21.54%
Bus and Truck Mechanics and Diesel Engine Specialists	430	-20.49%
Cooks, Restaurant	1030	-20.26%
Hairdressers, Hairstylists, and Cosmetologists	397	-20.19%
Combined Food Preparation and Serving Workers, Including Fast Food	2585	-17.77%
Automotive Service Technicians and Mechanics	687	-16.97%
Maids and Housekeeping Cleaners	713	-14.26%
Personal Care Aides	883	-12.96%

Total Employment-Transylvania County



Industry Employment & Recession Impact- Transylvania County

Industry Employment & Recession Impact-Transylvania County

Green = Employment Gain

NAICS	Industry	2001		2008		
		Employment at Recession	Change Five Years Later	Employment at Recession	Change Five Years Later	Change Eleven Years Later
	Total	9,676	(1,300)	9,244	(1,300)	(314)
11	Agriculture, Forestry, Fishing and Hunting	63	(63)	20	(20)	(1)
23	Construction	703	62	902	(581)	(356)
31	Manufacturing	2,447	(1,995)	407	(15)	363
42	Wholesale Trade	190	148	378	(242)	(179)
44	Retail Trade	1,288	(9)	1,594	(266)	(294)
48	Transportation and Warehousing	127	(17)	196	(94)	(82)
52	Finance and Insurance	252	(41)	243	(50)	(18)
53	Real Estate and Rental and Leasing	73	14	95	-	(6)
54	Professional, Scientific, and Technical Services	198	9	281	(64)	27
56	Administrative Services	184	33	331	(118)	(52)
62	Health Care	1,181	227	1,491	30	2
71	Arts, Entertainment, and Recreation	na	na	143	(26)	16
72	Accommodation and Food Services	939	115	1,045	(68)	114
92	Public Administration (Government)	644	16	701	25	47
61	Educational Services	951	25	971	49	114

Business Establishment Deaths-Transylvania County

Business Establishment Deaths-Transylvania County

NAICS	NAICS DESC	2006 to 2007	2007 to 2008	Recession 2008 to 2009	2009 to 2010	2010 to 2011	2011 to 2012	2012 to 2013	2013 to 2014	2014 to 2015	2015 to 2016
--	Total	79	86	125	101	96	71	66	63	66	53
11	Agriculture, Forestry, Fishing and Hunting		0	0	0	0	0	0	0	0	1
	Forestry, Fishing, Hunting, and Agriculture Support	0									
22	Utilities	0	0	0	0	0	0	0	0	0	0
23	Construction	20	21	39	30	26	17	10	10	10	2
31-33	Manufacturing	2	4	3	5	4	3	1	1	2	1
42	Wholesale Trade	4	0	4	0	4	0	0	0	0	6
44-45	Retail Trade	15	9	11	8	8	9	8	13	8	7
48-49	Transportation and Warehousing	0	3	4	3	2	1	1	1	0	1
51	Information	0	2	2	0	2	1	2	0	0	0
52	Finance and Insurance	2	1	6	7	3	7	4	4	3	3
53	Real Estate and Rental and Leasing	5	9	7	11	1	2	6	4	6	3
54	Professional, Scientific, and Technical Services	4	5	9	8	10	5	6	6	2	9
55	Management of Companies and Enterprises	0	0	0	0	0	1	0			
56	Administrative and Support and Waste Management and Remediation Services	8	5	11	5	4	4	9	5	7	2
61	Educational Services	1	0	1	1	0	1	0	1	2	1
62	Health Care and Social Assistance	5	9	5	3	9	7	5	2	7	3
71	Arts, Entertainment, and Recreation	4	2	4	3	1	2	0	2	3	1
72	Accommodation and Food Services	2	9	10	11	10	4	9	7	11	3
81	Other Services (except Public Administration)	7	6	6	4	12	6	4	7	3	8

Business Establishment Births-Transylvania County

Business Establishment Births-Transylvania County

NAICS	NAICS DESC	2006 to 2007	2007 to 2008	Recession 2008 to 2009	2009 to 2010	2010 to 2011	2011 to 2012	2012 to 2013	2013 to 2014	2014 to 2015	2015 to 2016
--	Total	100	109	69	77	65	68	72	69	63	56
11	Agriculture, Forestry, Fishing and Hunting		0	0	0	0	0	1	0	1	0
	Forestry, Fishing, Hunting, and Agriculture Support	0									
22	Utilities	0	0	1	0	0	0	0	0	0	0
23	Construction	19	27	10	12	18	14	14	7	8	14
31-33	Manufacturing	3	2	2	1	1	3	1	3	3	0
42	Wholesale Trade	2	1	0	1	1	4	2	2	3	0
44-45	Retail Trade	11	10	10	11	6	7	13	7	8	7
48-49	Transportation and Warehousing	6	1	2	2	1	0	0	1	0	0
51	Information	1	2	0	2	1	1	0	0	0	0
52	Finance and Insurance	9	7	5	5	2	6	0	4	1	1
53	Real Estate and Rental and Leasing	9	10	2	2	0	3	7	4	3	3
54	Professional, Scientific, and Technical Services	7	5	5	6	7	5	6	4	6	7
55	Management of Companies and Enterprises	1	0	0	0	1	0	0			
56	Administrative and Support and Waste Management and Remediation Services	8	9	6	5	5	5	6	10	4	3
61	Educational Services	0	2	3	0	1	1	2	1	2	2
62	Health Care and Social Assistance	5	7	6	6	6	8	3	9	8	4
71	Arts, Entertainment, and Recreation	4	2	1	3	1	0	3	2	1	2
72	Accommodation and Food Services	6	12	9	11	7	4	10	8	6	7
81	Other Services (except Public Administration)	7	7	7	9	7	6	3	4	8	4

How are Businesses Responding?

- Immediate response
 - Strategic shutdowns or selling assets if able to preserve/generate cash
 - Communicating with customers
 - Communicating with lenders
 - Applying for programs (backlog)
 - Worked/working with employees on contingency plans and unemployment benefits (backlog)
 - Small businesses are innovating
 - Pivoting to provide services /goods to address public health needs
 - Strategic planning for reopening with different services/products
 - Incorporating compliance with physical distancing guidelines
- Essential business operations
 - Understanding varying local policies
 - Health monitoring of employees before and after shifts
 - Using face masks during shifts to reduce unintended spread within workplaces
 - Following new Executive Orders/ CDC/OSHA guidance
 - Increasing sanitation/cleaning of facilities (before, during & after shifts)
 - Work from home/telecommunication
 - Segmenting into solo-work or smaller teams (modified shifts)
 - Reduce contact points with vendors
 - Reducing contact points with public
 - Identifying “hot spots” of potential spread within facilities and eliminating

Things To Be Aware Of

- Some local essential businesses are hiring i.e. TVS, Gaia
 - Security guards, nurses, production support (mfg.), cashier, bank teller, etc.
- Essential businesses able to continue operations could be aided by improved testing resources (private or public testing). Can help reduce uncertainty about the condition of an employee/team (reduce self-quarantine measures)
- Essential and non-essential businesses have capabilities and have/can assist with PPE and other goods and services and appreciate the county and Pisgah Health.
- Supply opportunities for large and small businesses
 - Military Business Center
 - SupplyConnector.org
- Telecommunication has become increasingly important for remote work
- Task force-Information/ survey data is valuable and is helping prioritize town hall information and organizational responses
- Task force-Seasonality may be an issue for some sectors due to impacted Spring/Summer (Winter 2020-2021)

Emergency Bridge Loan Programs

- GLF (NC House \$25M) •
 - \$15M loan pool
 - Not accepting new apps
 - Up to \$50,000
 - 0% Interest
 - No payments for 6 months
 - If no repayment loan is automatically converted to a term loan
 - Administered by Mtn. Biz Works (CDFI)
 - 2% origination fee
 - 1% serving fee
 - Allows local government to use structure for local loan pools
- Buncombe County
 - Public policy above state directives
 - \$300k (county) + 100k Asheville and other municipal & private sector contributions
 - Initiative also includes small grant component to support impacted workers
 - Up to \$10,000
 - No payments for 6 months
 - <50 employees
 - For-profit
 - Demonstrate loss
 - Made +/- 250k in loans
- Haywood County
 - Up to \$10,000
 - 6 months no payments
 - 4% interest accruing, convert to 5.5% interest, 36 month biz loan
 - No prepayment penalties
 - Defaulted loans are subject to collections
 - County (\$100k +10.5k admin), Advancement Foundation (\$250k)



TRANSYLVANIA TOMORROW

Task Force Communication

- Business Resource Page (brevardncchamber.org/covid-19)
 - Business hours (restaurants, retailers)
 - Webinars
 - Financial/Loan Program Information
 - Public Health/Executive Orders
- 1st Task Force Town Hall Webinar (4/1/20)
 - SBA, NC Works, Van Winkle Law Firm, Task Force
 - Question & Answer session w/ Experts
 - Free recording available for those not able to attend
- 2nd Task Force Town Hall Webinar (4/16/20)
 - SBA, Economic Injury Loans/Payroll Protection Program/Other
 - Task force update
 - Recording will be made available

Small Business Emergency Relief Fund

- Private sector fund
 - \$26,000 committed
 - \$5,000 donation from Comporium
 - Seeking contributions from corporations, businesses, foundations
 - Up to \$3,000 grants to private businesses
 - Distributed quickly to help with basic expenses during forced shutdown (rent, payroll, insurance, utilities)
- Eligible businesses
 - Must have primary operations in Transylvania County
 - <50 FTE
 - Demonstrate >25% decrease in revenue due to COVID-19
 - Prefer
 - >12 months in operation
 - Brick & mortar locations
 - Good standing with tax/licenses
 - Independently owned

D. Impact of COVID-19 on the FY 21 Budget Preparations

TRANSYLVANIA COUNTY BOARD OF COMMISSIONERS
REGULAR MEETING AGENDA
Multipurpose Chambers-County Administration Building
101 South Broad Street, Brevard, NC
Tuesday, April 9, 2019 @ 9:00 a.m.

TRANSYLVANIA COUNTY BOARD OF COMMISSIONERS
REGULAR MEETING AGENDA
Multipurpose Chambers-County Administration Building
101 South Broad Street, Brevard, NC
Monday, April 13, 2020 @ 4:00 p.m.

CALL TO ORDER

I. WELCOME

II. PUBLIC COMMENT (15 minute time limit)

Sign up is required. Speakers will be limited to three minutes. The public comment period will close when there are no more speakers or the 15 minute limit is reached.

III. AGENDA MODIFICATIONS

IV. CONSENT AGENDA

All items listed below are considered routine and will be enacted by one motion. No separate discussion will be held except on a request of a member of the Board of Commissioners.

- A. Minutes
- B. Authorize County Manager to Execute Copier Maintenance and Lease Agreements
- C. Modification of Sheriff's Tuition Assistance Reserve Fund Revenue
- D. FY 19-20 Renewal of Correctional Health Services Agreement
- E. Proclamation – Guardian Ad Litem Child Advocate Month

V. PRESENTATIONS/RECOGNITIONS

- A. Blue Ridge Health Update

VI. APPOINTMENTS

VII. OLD BUSINESS

VIII. NEW BUSINESS

- A. Handicap Accessible Showers at Recreation Center/Primary Shelter Location
- B. Environmental Health Software Recommendation
- C. Manager's Report

IX. PUBLIC COMMENT

Speakers will be limited to three minutes. The Chairman will limit the number of speakers speaking on the same subject. No one individual will be permitted to repetitively speak on the same subject.

X. COMMISSIONERS' COMMENTS

ADJOURNMENT

CALL TO ORDER

I. WELCOME

II. PUBLIC COMMENT (15-minute time limit)

Sign up is required. Speakers will be limited to three minutes. The public comment period will close when there are no more speakers, or the 15-minute limit is reached.

III. AGENDA MODIFICATIONS

IV. CONSENT AGENDA

All items listed below are considered routine and will be enacted by one motion. No separate discussion will be held except on a request of a member of the Board of Commissioners.

- A. Minutes
- B. Proclamation – Older Americans Month 2020

V. CORONAVIRUS/COVID-19

- A. Coronavirus/COVID-19 Update – Public Health
- B. Coronavirus/COVID-19 Update – County Operations
- C. Coronavirus/COVID-19 Update – Business Support
- D. Impact of COVID-19 on the FY 21 Budget Preparations
- E. Allocation of Funds for COVID-19 Response
- F. Families First Coronavirus Response Act Policy Compliance
- G. Late Listing Penalty Relief
- H. Informational Letter to Second Homeowners

VI. NEW BUSINESS

- A. Manager's Report

VII. PUBLIC COMMENT

Speakers will be limited to three minutes. The Chairman will limit the number of speakers speaking on the same subject. No one individual will be permitted to repetitively speak on the same subject.

VIII. COMMISSIONERS' COMMENTS

IX. CLOSED SESSION

- A. Per NC General Statute 143-318.11 (a) (5) To establish, or to instruct the public body's staff or negotiating agents concerning the position to be taken by or on behalf of the public body in negotiating the price and other material terms of a contract or proposed contract for the acquisition of real property by purchase, option, exchange, or lease

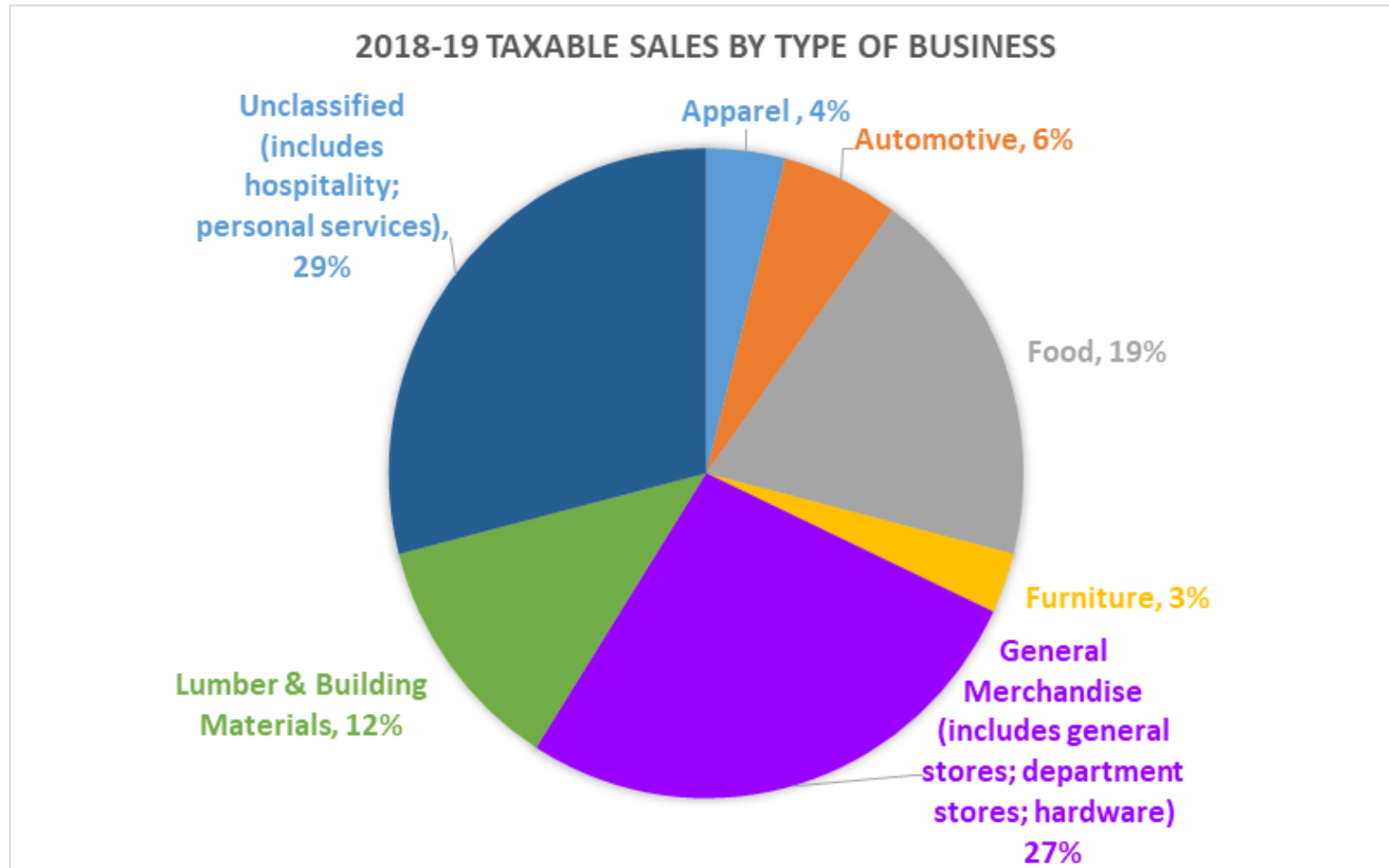
ADJOURNMENT

D. Impact of COVID-19 on the FY 21 Budget Preparations

- Budget requests from individual departments were submitted in February
 - Normally, management would review these in person with departmental leadership, social distancing would preclude typical procedures on that front. April would be commissioner briefings and evaluation
- Normal procedure for the budget cycle is that departments submit requests for expenditures, management evaluates the justifications for inclusion, management estimates revenues and then adjust expenditures down until it balances while using funding priorities to determine any new expenses.
 - In this environment, revenues have become a moving target (trending down) and so the gap to close is changing week to week.
- Management also has to assess departmental requests differently – budget requests submitted were for a full year of normal operations and not a spending plan for closures that extend past June 30 or a potential second round of closures in the fall.

D. Impact of COVID-19 on the FY 21 Budget Preparations

- Sales and use tax collections will be impacted by shutdowns and closures
- Many goods and services considered essential are subject to sales and use taxes (grocery, hardware, general retail)
- Essential services accounted for approximately 60% taxable sales in 2019



D. Impact of COVID-19 on the FY 21 Budget Preparations

- Significant lag time in sales tax collections and distributions –
 - true impact on FY 20 won't be known until at least September 2020
 - final impact on FY 21 not until the same time the following year 2021.
- 4-month life cycle of a sales tax levy makes it difficult to truly build expenditures around sales tax collections and distributions.



- Moderate and severe scenarios inline with 2008-2010 recession, but extreme and very extreme options are what most County financial officials are anticipating given the unique nature of closures.

D. Impact of COVID-19 on the FY 21 Budget Preparations

- Calculated different scenarios using 2019 annual sales tax collections as a baseline in agenda packet. Sales tax collections were trending approximately 10% over 2019's baseline for the first half of the fiscal year before the closures began.
- \$800,000 in revenue losses is the worst-case scenario for FY 2020
 - Tax Rate Equivalent: .75
- If closures and lower consumer spending levels continue through December 2020, possible impact of nearly \$1.4 million through the second quarter of Fiscal 2021 in most extreme scenario.
 - Tax Rate Equivalent 2.24
- Working paper published by NC State Professor Bruce McDonald estimates Transylvania's operating ratio (total revenue to total expenditures) would remain healthy in 2020 even with a 50% drop in sales tax remaining for 2020. (This would require spending fund balance currently assigned for other purposes AND the bond tax funds currently budgeted)
- If the drop remains 50% through first half (July – December) of FY2021, Transylvania would fall into the category of “borderline distressed” as defined by Department of State Treasurer.
 - If lower sales tax collections continue through 3rd Quarter 2021 (January – March 2021), two thirds of the NC Counties would be in fiscal stress.
 - This impact could be a result of prolonged shelter in place OR fear driving reduced spending

D. Impact of COVID-19 on the FY 21 Budget Preparations

Sales of Services by Departments:

Anticipate the following departments to losing revenues:

- **Parks and Recreation** estimates loss of about \$7,500 in revenues over the period of closures of the activity; approximately \$2,000 a week. Best case through late June/early July is \$8,000 in lost revenues on annual events, worst case is \$14,000.
- **Library** is losing about \$500 per week in normal operational fees and lost rentals of its facilities
- **Public Health Department's** clinic has been closed to most access but has not yet felt any significant revenue constraints; **Environmental Health** department has not experienced any changes in permitting revenue
- **Register of Deeds** not currently reporting significant changes in revenues, last week equivalent to same period for 2019.
- **Building Permitting and Enforcement** Department estimates roughly a \$1,000 decline in weekly revenues, though this may also be the result of seasonal changes in the housing market

Overall, we would expect from all service departments a drop of:

- \$3,500 per week, up to \$42,000 through the end of the FY if all closures and new usage patterns remain in effect
- \$18,000 in one-time losses on summer Parks and Recreation programs

D. Impact of COVID-19 on the FY 21 Budget Preparations

Investment Returns:

- Effective compound yield of County's capital management trust portfolio fell from 1.45% to 0.49% from the first day of March to the last.
- In real terms, accrued interest on NCCMT portfolio totaled \$45,146 in February and fell to \$31,396 in March
- County would lose approx. \$41,000 through the end of the FY 2019, more difficult to estimate figures for 2021.
- TRE of budgeted 2020 investment returns was .84. Estimated lower interest rates push investment return TRE to .58.

Known Impacts

- Lost Revenues:
 - Between \$216,000 and \$881,000 in FY2020 (TRE .36 to 1.48)
 - Sales tax impacts through the rest of the fiscal year could be as high as \$1.4 million (TRE 2.24)
- Increased Expenditures:
 - As of this time, Commissioners have authorized \$75,000 to be spent on COVID-19 response and \$108,000 on capital projects to equip the Public Safety Facility

D. Impact of COVID-19 on the FY 21 Budget Preparations

- **Unknown (or difficult to assess) Financial Impacts**
 - Some counties have adjusted their anticipated tax collection rate
 - Average has been to lower it by .25%
 - Equivalent figure for Transylvania on current levy of .636/\$100 is \$100,000.
 - The General Assembly is discussing acting on the deadlines for motor vehicle registrations (tax and tag system)
 - Deadline extensions would delay collection and distribution of sales taxes levied on motor vehicles (current year averages about \$160,000 per month)
 - The State could make changes to the Medicaid Hold Harmless sales tax distribution (\$792,000 currently in FY 2020).
 - With high unemployment, North Carolina will see reduced personal income tax collections – in the last recession this led to certain expenses being passed along to local governments.

E. Allocation of Funds for COVID-19 Response

- ❑ At the previous meeting, staff asked Commissioners to consider appropriation of General Economic Development Project Fund Balance to for COVID-19 response
- ❑ Commissioners appropriated \$75,000 from unassigned fund balance and requested further discussion at a future meeting on a more permanent decision.
- ❑ Recommendation at prior meeting was not to use unassigned fund balance.

F. Families First Coronavirus Response Act Policy Compliance

- ❑ The federal government passed the Families First Coronavirus Response Act effective April 1; employers must be compliant by April 17
- ❑ Contains provisions for emergency sick leave and FMLA
- ❑ Most County employees would fall under the exemption as defined by Dept of Labor
- ❑ Proposed policy extends benefits up to 2 weeks of emergency sick leave for documented illness, expires December 31
- ❑ Many exempt employees are front line employees during the pandemic and most likely to be exposed
- ❑ In County's best interest to acknowledge the need for sick leave for all employees
- ❑ Financial impact unknown; expectation is total impact will not exceed \$250,000
- ❑ Recommendation is to approve the Transylvania County Families First Coronavirus Act policy as written and direct County Administration and Human Resources to administer

G. Late Listing Penalty Relief

- ❑ Several businesses have received an extension to file their 2020 business personal property listing form
- ❑ Many have not returned a completed filing as of this date likely due to COVID-19 closures/impacts
- ❑ NCGS 105-312(h) imposes a late listing penalty if forms are not filed with the Tax Office
- ❑ NCGS 105-312(k) grants the Board authority to waive the penalty
- ❑ NCDOR encouraged counties to consider adoption of a uniform application to allow for a simple method of requesting relief by taxpayers due to COVID-19
- ❑ If approved, Tax Administrator Jessica McCall has already prepared a memo to post on their website and to have readily available to staff if an extension is requested

H. Informational Letter to Second Homeowners

- ❑ Macon County recently mailed their property owners a letter requesting they remain in their primary residence if they own a second residence in Macon County due to county's medical limitations
- ❑ For Transylvania County
 - Out of 16,138 tax bills – 3,475 go to out of state addresses; 65 parcels are exempt accounts
 - Out of the 12,598 NC addresses – 783 outside of Transylvania County; 175 are Henderson County (T Co shares the postal city with H Co); and 292 are Sapphire addresses (T Co shares this postal city with Jackson County)
- ❑ Recommendation is for the Board to consider a similar letter asking second homeowners to remain at their primary residence
 - T Co does not want COVID-19 to expand beyond the capabilities of our resources
 - T Co's permanent resident population is the oldest, by median, in NC
 - T Co is in the community spread phase of pandemic
- ❑ Direct financial impact: \$2,184 for cost of mailing to 4,258 out of state and out of county property owners

New Business

- A. Added item: Resolution Recognizing National Public Health Week in Transylvania County
- B. Manager's Report

A. Resolution Recognizing National Public Health Week in Transylvania County

- ❑ April 6-12 is National Public Health Week
- ❑ More important, now than ever, to recognize all those in Public Health who are committed to the health and well-being of Transylvania County residents
- ❑ Recommendation is to approve Resolution #12-2020 Recognizing National Public Health Week in Transylvania County



National Public Health Week
NPHW @ 25: Looking Back, Moving Forward.

April 6 - 12, 2020

B. Manager's Report

- ❑ April 6-12, 2020 National Public Health Week
- ❑ Clerk to the Board Trisha Hogan sworn in as Vice-President of the NC Association of County Clerks on March 26, 2020
- ❑ Census 2020 response is behind- 79th in the state at 36.4% with potential to impact the ability for federal tax dollars to come back to serve this community
 - ❑ COVID-19 may be impacting Census 2020 response; messaging efforts on social media, community centers and through advisory boards
 - ❑ Planning & Community Development working on flyers with information on school feeding programs, take out order flyers, posts at essential locations
 - ❑ Encourage people to fill out the online response to prevent Census workers from knocking on their door after June 1 (field reactivation)
- ❑ National Public Safety Telecommunicators Week is **April 12-18, 2020**

B. Manager's Report

□ Sunday Storm Response

- In 24 hours, the County 911 center managed 394 responses from Law Enforcement, Emergency Management, EMS, Fire, Rescue and Animal Services. In addition 911 center staff answered 518 administrative phone calls
- Issues included: trees down with electrical wires involved, trees down on structures including homes and apartment complex, tree and power lines blocking roads, persons entrapped in a car with power line involvement, flooding, vehicles stranded in flood water, motor vehicle accidents, animal rescue from flooding (horses), flooding requiring evacuation, and request for shelter
- staff responded to loss of power, generator and communications capabilities at the Rich Mountain Tower during the event. This required coordination with EM, County Maintenance, Solid Waste staff, and NCDOT to clear a path to reach the tower site. This included use of the landfill front-end loader and operator, with chain saws to clear the path. Staff also opened a temporary shelter at the Recreation center to house displaced residents

B. Manager's Report

- ❑ Update from Duke Energy this morning:
 - ❑ Rich Mtn is the largest remaining trouble spot and was a main area of focus this morning. 1,900 customers out in the county, which is down from 8,152 on Monday.
 - ❑ Over 538 field personnel supporting restoration efforts in Transylvania and Henderson Counties and Duke expects to get the vast majority of the customers restored by midnight tonight.
 - ❑ In Transylvania County, 147 outage events left to repair and restore, and around 50% of those are single customer events. There is a ton of work to get the last 76 customers back on - a few may go into tomorrow



Public Comment





Commissioners' Comments



Closed Session

- A. Per NC General Statute 143-318.11 (a) (5) To establish, or to instruct the public body's staff or negotiating agents concerning the position to be taken by or on behalf of the public body in negotiating the price and other material terms of a contract or proposed contract for the acquisition of real property by purchase, option, exchange, or lease

Following a 5-minute recess



Adjournment

Thank you for attending!